



Dopyt

SNÍMAČE TEPLOTY

Séria TC10-B

TC10B-14365198

Typ K -40-1200°C 150x6mm G1/2" NL=50mm



- Termočlánky K, J, E, N, T
- Teplota -40 až 1200°C
- Pripojenie M, NPT
- Médiá voda, plyny, oleje
- ATEX, IECEx, SIL2, DNV GL

POPIS PRODUKTU

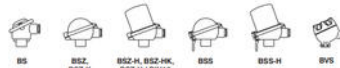
ŠPECIFIKÁCIA

Insertion length	150 mm
Materiál kontaktnej časti	Inococonel - 600
Material Sensor Body	Nerezová oceľ 316Ti
Materiál tela	Hliník
Neck length	0,05 m
Plug diameter	6 mm
Prevádzková teplota max.	1200 °C
Prevádzková teplota min.	-40 °C
Teplota okolia do	80 °C
Teplota okolia od	-40 °C
Trieda krytia	IP65



Connection head

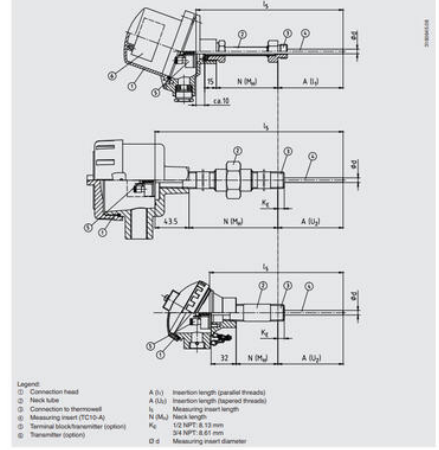
• European designs per EN 50446 / DIN 43735



Model	Material	Cable entry thread size	Ingress protection (max.)	Cap	Surface	Connection to neck tube
BS	Aluminum	M20 x 1.5 or 1/4 NPT ¹⁾	IP65, IP68	Flat cap with 2 screws	Blk, lacquered ²⁾	M24 x 1.5, 1/4 NPT
BSZ	Aluminum	M20 x 1.5 or 1/4 NPT ¹⁾	IP65, IP68	Spherical hinged cover with cylinder head screw	Blk, lacquered ²⁾	M24 x 1.5, 1/4 NPT
BSZ-H	Aluminum	M20 x 1.5 or 1/4 NPT ¹⁾	IP65, IP68	Raised hinged cover with cylinder head screw	Blk, lacquered ²⁾	M24 x 1.5, 1/4 NPT
BSZ-H (2x cable outlet)	Aluminum	2x M20 x 1.5 or 2x 1/4 NPT ¹⁾	IP65, IP68	Raised hinged cover with cylinder head screw	Blk, lacquered ²⁾	M24 x 1.5, 1/4 NPT
BSZ-H/DH10 ³⁾	Aluminum	M20 x 1.5 or 1/4 NPT ¹⁾	IP65	Raised hinged cover with cylinder head screw	Blk, lacquered ²⁾	M24 x 1.5, 1/4 NPT
BSS	Aluminum	M20 x 1.5 or 1/4 NPT ¹⁾	IP65	Spherical hinged cover with clamping lever	Blk, lacquered ²⁾	M24 x 1.5, 1/4 NPT
BSS-H	Aluminum	M20 x 1.5 or 1/4 NPT ¹⁾	IP65	Raised hinged cover with clamping lever	Blk, lacquered ²⁾	M24 x 1.5, 1/4 NPT
BVS	Stainless steel	M20 x 1.5 3 ^{rd)}	IP65	Precision-cast screw on top	Blank, electropolished	M24 x 1.5
BSZ-K	Plastic	M20 x 1.5 or 1/4 NPT ¹⁾	IP65	Spherical hinged cover with cylinder head screw	Black	M24 x 1.5
BSZ-HK	Plastic	M20 x 1.5 or 1/4 NPT ¹⁾	IP65	Raised hinged cover with cylinder head screw	Black	M24 x 1.5

Model	Explosion protection				
	Without	Ex I (gas) Zone 0, 1, 2	Ex I (dust) Zone 20, 21, 22	Ex nA (gas) Zone 2	Ex tc (dust) Zone 22
BS	x	-	-	-	-
BSZ	x	x	x	x	x
BSZ-H	x	x	x	x	x
BSZ-H (2x cable outlet)	x	x	x	x	x
BSZ-H/DH10 ³⁾	x	x	-	-	-
BSS	x	x	-	-	-
BSS-H	x	x	-	-	-
BVS	x	x	-	-	-
BSZ-K	x	x	-	-	-
BSZ-HK	x	x	-	-	-

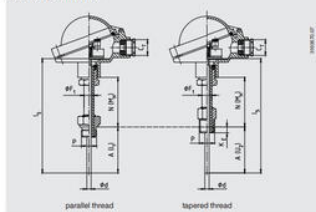
Fig. with parallel thread, for tapered thread see "Connection to thermowell"



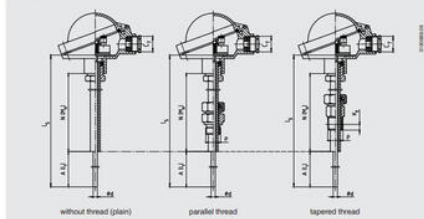
- Legend
- ① Connection head
 - ② Neck tube
 - ③ Connection to Thermowell
 - ④ Measuring insert (TC10-A)
 - ⑤ Terminal block/transmitter (option)
 - ⑥ Transmitter (option)
- A (d) Insertion length (parallel threads)
A (d) Insertion length (tapered threads)
L1 Measuring insert length
N (D_M) Neck length
K1 1/2 NPT: 8.13 mm
3/4 NPT: 5.61 mm
D d Measuring insert diameter

Neck tube designs

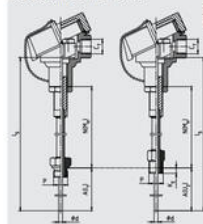
Neck tube per DIN 43772



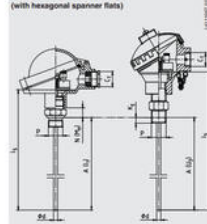
Neck tube per DIN 43772, straight, with/without compression fitting



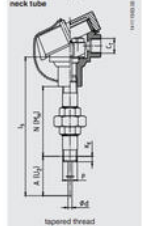
Neck tube, with counter nut to head



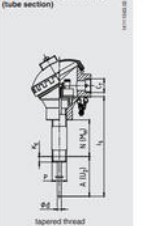
Double threaded hex bushing (with hexagonal spacers flats)



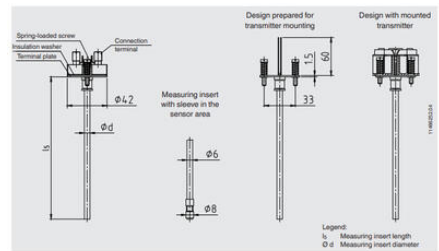
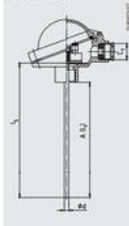
"Ripple-suction-ripple" neck tube



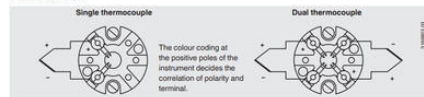
Double threaded hex bushing (tube section)



Without neck tube

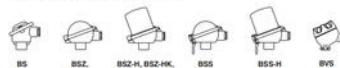


Electrical connection



Connection head

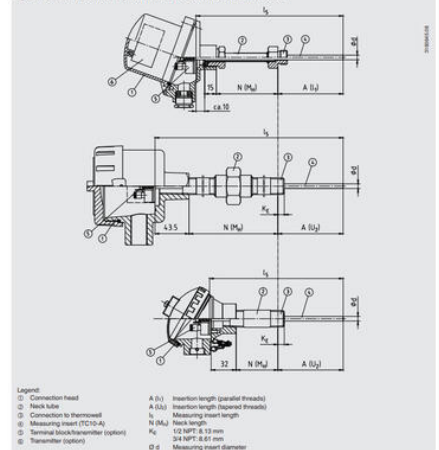
• European designs per EN 50446 / DIN 43735



Model	Material	Cable entry thread size	Ingress protection (max.)	Cap	Surface	Connection to neck tube
BS	Aluminum	M20 x 1.5 or 1/4 NPT ¹⁾	IP65, IP68	Flat cap with 2 screws	Blk, lacquered ²⁾	M24 x 1.5, 1/4 NPT
BSZ	Aluminum	M20 x 1.5 or 1/4 NPT ¹⁾	IP65, IP68	Spherical hinged cover with cylinder head screw	Blk, lacquered ²⁾	M24 x 1.5, 1/4 NPT
BSZ-H	Aluminum	M20 x 1.5 or 1/4 NPT ¹⁾	IP65, IP68	Raised hinged cover with cylinder head screw	Blk, lacquered ²⁾	M24 x 1.5, 1/4 NPT
BSZ-H (2x cable outlet)	Aluminum	2x M20 x 1.5 or 2x 1/4 NPT ¹⁾	IP65, IP68	Raised hinged cover with cylinder head screw	Blk, lacquered ²⁾	M24 x 1.5, 1/4 NPT
BSZ-H/DH10 ³⁾	Aluminum	M20 x 1.5 or 1/4 NPT ¹⁾	IP65	Raised hinged cover with cylinder head screw	Blk, lacquered ²⁾	M24 x 1.5, 1/4 NPT
BSS	Aluminum	M20 x 1.5 or 1/4 NPT ¹⁾	IP65	Spherical hinged cover with clamping lever	Blk, lacquered ²⁾	M24 x 1.5, 1/4 NPT
BSS-H	Aluminum	M20 x 1.5 or 1/4 NPT ¹⁾	IP65	Raised hinged cover with clamping lever	Blk, lacquered ²⁾	M24 x 1.5, 1/4 NPT
BVS	Stainless steel	M20 x 1.5 3 ^{rd)}	IP65	Precision-cast screw on top	Blank, electropolished	M24 x 1.5
BSZ-K	Plastic	M20 x 1.5 or 1/4 NPT ¹⁾	IP65	Spherical hinged cover with cylinder head screw	Black	M24 x 1.5
BSZ-HK	Plastic	M20 x 1.5 or 1/4 NPT ¹⁾	IP65	Raised hinged cover with cylinder head screw	Black	M24 x 1.5

Model	Explosion protection				
	Without	Ex I (gas) Zone 0, 1, 2	Ex I (dust) Zone 20, 21, 22	Ex nA (gas) Zone 2	Ex tc (dust) Zone 22
BS	x	x	-	-	-
BSZ	x	x	x	x	x
BSZ-H	x	x	x	x	x
BSZ-H (2x cable outlet)	x	x	x	x	x
BSZ-H/DH10 ³⁾	x	x	-	-	-
BSS	x	x	-	-	-
BSS-H	x	x	-	-	-
BVS	x	x	-	-	-
BSZ-K	x	x	-	-	-
BSZ-HK	x	x	-	-	-

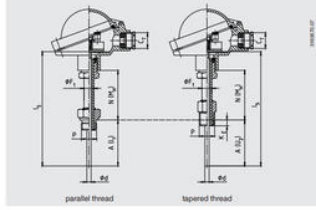
Fig. with parallel thread, for tapered thread see "Connection to thermowell"



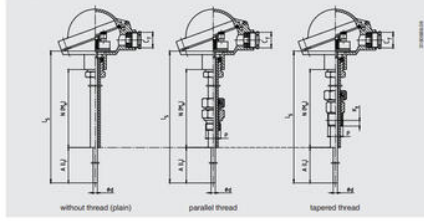
- Legend
- ① Connection head
 - ② Neck tube
 - ③ Connection to Thermowell
 - ④ Measuring insert (TC10-A)
 - ⑤ Terminal block/transmitter (option)
 - ⑥ Transmitter (option)
- A (d) Insertion length (parallel threads)
A (d) Insertion length (tapered threads)
L1 Measuring insert length
N (D_M) Neck length
K1 1/2 NPT: 8.13 mm
3/4 NPT: 5.61 mm
D d Measuring insert diameter

Neck tube designs

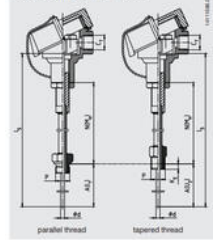
Neck tube per DIN 43772



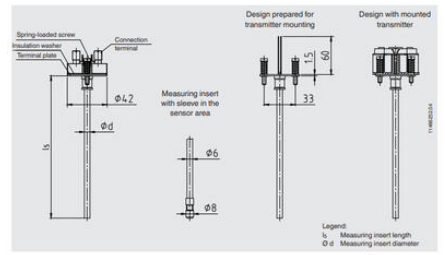
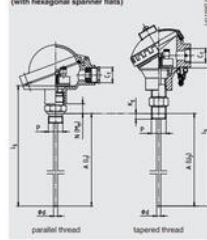
Neck tube per DIN 43772, straight, with/without compression fitting



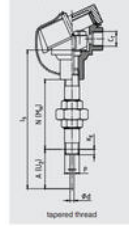
Neck tube, with counter nut to head



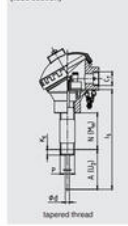
Double threaded hex bushing (with hexagonal spigot flats)



"Ripple-union-ripple" neck tube



Double threaded hex bushing (tube section)



Without neck tube

