



Dopyt

## ODSTREDIVÉ ČERPADLÁ

Séria 50850



50850-2012  
Odstredivé čerpadlá

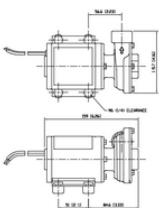


- Prietok až 50 l/min
- Tlak až 0,6 Bar

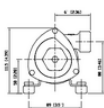
### POPIS PRODUKTU

## ŠPECIFIKÁCIA

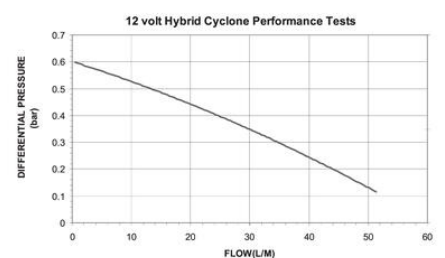
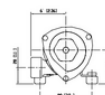
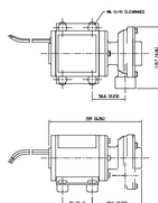
Current	12 V DC
Elastomer	Nitril
Hmotnosť	2,9 kg
Material impeller	Odolný voči kyselinám
Material of axle seal	Uhlík / keramika
Material of shaft	Odolný voči kyselinám
Materiál tela	Odolný voči kyselinám
Materiál tesnenia	Nitril
Max. dovolený tlak	0,6 bar
Prietok max.	50 l/min
Procesné pripojenie	3/4 BSP
Prúd max.	7 A
Teplota média do	95 °C
Teplota média od	4 °C
Viscosity Max	20 cP

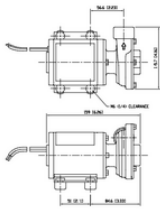


Dimensions in mm (inches)  
Weight 2.5kg (5.51lbs)  
50850-2012/50850-0012



Dimensions in mm (inches)  
Weight 2.54kg (5.6lbs)  
50850-2124





Dimensions in mm (inches)  
 Weight 2.5kg (5.51lbs)

50850-2012/50850-0012

Dimensions in mm (inches)  
 Weight 2.54kg (5.6lbs)

50850-2124

