



Dopyt

VIAC TÓNOVÉ MULTIFUNKČNÉ SIRÉNY SÉRIE AS

Série AS

874060405

ASS-P 8 tónová siréna vel.1 24 V



POPIS PRODUKTU

ŠPECIFIKÁCIA

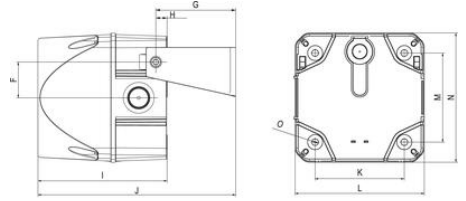
Druh montáže	Nezávislý
Farba tela	Červená
Frekvencia max	4600 Hz
Frekvencia min	500 Hz
Hladina zvuku max	108 dB
Hmotnosť	300 g
Menovitý prúd max	0,1 A
Menovitý prúd min	0,1 A
Napájacie napätie	24 V
Napájacie napätie AC / DC max.	26,4 V
Napájacie napätie AC / DC min.	21,6 V
Ovládanie zvuku	Áno
Počet tónov	8 ks
Prevádzková teplota max.	60 °C
Prevádzková teplota min.	-30 °C
Priemer	94 mm
Prierez vodičov	2,5 mm ²
Trieda krytia	IP66



The sound pressure decreases by 6 dB when doubling the distance; the following distance table is to be seen as indication, as also factors like tone type, wind speed, wind direction, humidity, weather conditions etc. do influence the sound pressure level.

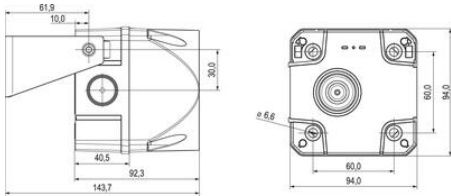
Distance (m)	Sound pressure dB (A)																					
1	65	70	75	80	85	90	92	94	96	98	100	102	104	106	108	110	112	114	116	118	120	
2	59	64	69	74	79	84	86	88	90	92	94	96	98	100	102	104	106	108	110	112	114	116
3	55	60	65	70	75	80	82	84	86	88	90	92	94	96	98	100	102	104	106	108	110	114
5	51	56	61	66	71	76	78	80	82	84	86	88	90	92	94	96	98	100	102	104	106	110
10	45	50	55	60	65	70	72	74	76	78	80	82	84	86	88	90	92	94	96	98	100	104
20	39	44	49	54	59	64	66	68	70	72	74	76	78	80	82	84	86	88	90	92	94	98
30	35	40	45	50	55	60	62	64	66	68	70	72	74	76	78	80	82	84	86	88	90	94
50	30	35	40	45	50	55	57	59	61	63	65	67	69	71	73	75	77	79	81	83	85	88
100	26	31	36	41	46	51	53	55	57	59	61	63	65	67	69	71	73	75	77	79	81	84
200	23	28	33	38	43	48	50	52	54	56	58	60	62	64	66	68	70	72	74	76	78	81
500	19	24	29	34	39	44	46	48	50	52	54	56	58	60	62	64	66	68	70	72	74	78

The sound pressure decreases by 6 dB when doubling the distance



	A	B	C	D	E	F	G	H	I	J	K	L	M	N	O
Size 2	143	95	10	32	50	36,5	81,5	11,5	131,5	86,8	91	131,8	91	131,8	6,5
Size 3	199	113	16	48	70	55	105,5	18,5	168,9	118,4	124	183,5	124	183,5	6,5
Size 4	243,3	140	25	70	100	83	133,3	16,8	216,9	146,6	167	228,4	167	228,4	6,5

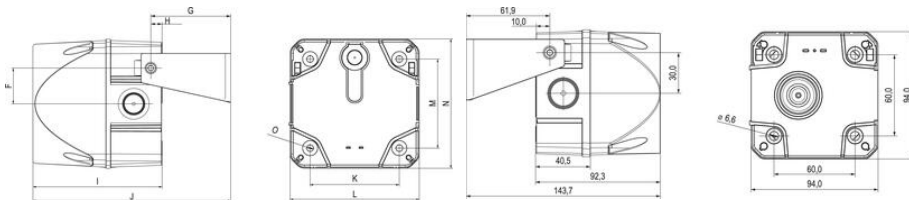
Measuring unit mm



The sound pressure decreases by 6 dB when doubling the distance; the following distance table is to be seen as indication, as also factors like tone type, wind speed, wind direction, humidity, weather conditions etc. do influence the sound pressure level.

Distance (m)	Sound pressure dB (A)																					
1	65	70	75	80	85	90	92	94	96	98	100	102	104	106	108	110	112	114	116	118	120	
2	59	64	69	74	79	84	86	88	90	92	94	96	98	100	102	104	106	108	110	112	114	116
3	55	60	65	70	75	80	82	84	86	88	90	92	94	96	98	100	102	104	106	108	110	114
5	51	56	61	66	71	76	78	80	82	84	86	88	90	92	94	96	98	100	102	104	106	110
10	45	50	55	60	65	70	72	74	76	78	80	82	84	86	88	90	92	94	96	98	100	104
20	39	44	49	54	59	64	66	68	70	72	74	76	78	80	82	84	86	88	90	92	94	98
30	35	40	45	50	55	60	62	64	66	68	70	72	74	76	78	80	82	84	86	88	90	94
50	30	35	40	45	50	55	57	59	61	63	65	67	69	71	73	75	77	79	81	83	85	88
100	26	31	36	41	46	51	53	55	57	59	61	63	65	67	69	71	73	75	77	79	81	84
200	23	28	33	38	43	48	50	52	54	56	58	60	62	64	66	68	70	72	74	76	78	81
500	19	24	29	34	39	44	46	48	50	52	54	56	58	60	62	64	66	68	70	72	74	78

The sound pressure decreases by 6 dB when doubling the distance



	A	B	C	D	E	F	G	H	I	J	K	L	M	N	O
Size 2	143	95	10	32	50	36,5	81,5	11,5	131,5	86,8	91	131,8	91	131,8	6,5
Size 3	199	113	16	48	70	55	105,5	18,5	168,9	118,4	124	183,5	124	183,5	6,5
Size 4	243,3	140	25	70	100	83	133,3	16,8	216,9	146,6	167	228,4	167	228,4	6,5

Measuring unit mm