



PNEUMATICKÉ VALCE

Séria G449

G449AL1G0005A00

Pneumatiký válec G449 Ø20 5 mm, jednocinný

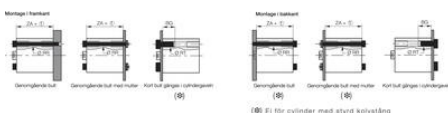
- ISO 21287
- Ø20mm až 100mm
- Zdvih 5mm až 400mm
- Jedno alebo dvojčinné

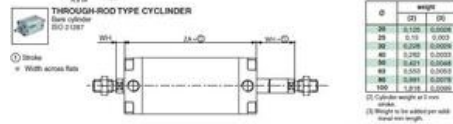
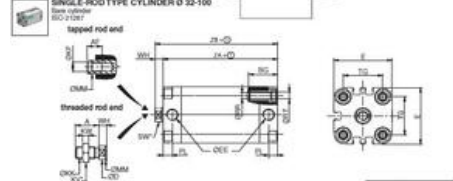
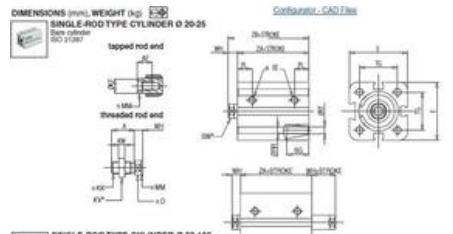
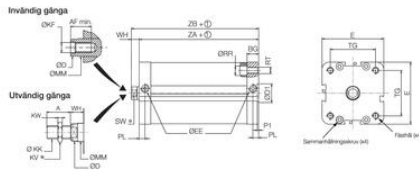


POPIS PRODUKTU

ŠPECIFIKÁCIA

Druh montáže	Nezávislý
Funkcia	Jednočinný, Neprerušené
Materiál čela	Hliník
Materiál pružiny	Nerezová oceľ
Materiál tela	Eloxovaný hliník
Max. dovolený tlak	10 bar
Piestnica	Nerezová oceľ
Pracovný tlak jednočinný max.	10 bar
Pracovný tlak jednočinný min.	0 bar
Prevádzková teplota max.	70 °C
Prevádzková teplota min.	-20 °C
Priemer piestu	20 mm
Pripojenie pre pilotný vzduch	M5
Tesnenie piestnice	PUR
Tesnenie piestu	PUR
Vnútorne diely	Hliník, POM
Zdvih	5 mm

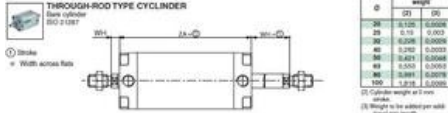
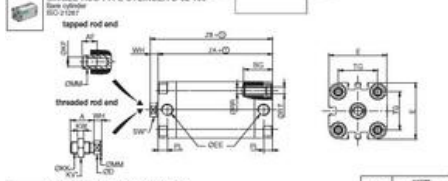
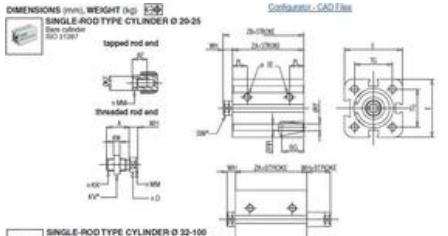




Ø	weight
(1)	(2)
32	0.120 0.0026
35	0.19 0.003
40	0.268 0.0036
45	0.342 0.0039
50	0.421 0.0048
55	0.503 0.0053
60	0.589 0.0059
75	0.878 0.0082

(1) Cylinder weight and 2 mm stroke
(2) Weight to be added per each thread run length

Ø	A	AF	BG	DG	EE	EE'	DKF	DKX	KV	KW	DM	DO	D	SW	TG	WH	ZA	ZB	
32	18	10	15	8.8	36	36	M6x1.25	13	4	10	10	4.2	M3	8	25	8	27	43	
35	18	10	15	8.8	30	30	M6x1.25	13	4	10	10	4.2	M3	8	25	8	27	43	
40	18	10	23.5	11.8	40	40	G 1/8	M6x1.25	16	5	12	7.8	5.1	M3	10	32.5	7	44	55
45	18	10	23.5	11.8	44	44	G 1/8	M6x1.25	16	5	12	7.8	5.1	M3	10	36	7	43	52
50	22	16	24	15.8	46	46	G 1/8	M6x1.25	16	6	16	7.8	6.7	M3	13	45.5	8	40	53
55	22	16	24	15.8	50	50	G 1/8	M6x1.25	16	6	16	7.8	6.7	M3	13	44.5	8	49	57
60	28	20	26.5	19.8	46	46	G 1/8	M6x1.5	24	8	20	8.8	8.4	M3	16	53	10	54	66
75	35	25	35.5	24.8	55	55	G 1/8	M6x1.5	24	8	25	10	9.4	M3	21	66	10	67	77



Ø	weight
(1)	(2)
32	0.120 0.0026
35	0.19 0.003
40	0.268 0.0036
45	0.342 0.0039
50	0.421 0.0048
55	0.503 0.0053
60	0.589 0.0059
75	0.878 0.0082

(1) Cylinder weight and 2 mm stroke
(2) Weight to be added per each thread run length

Ø	A	AF	BG	DG	EE	EE'	DKF	DKX	KV	KW	DM	DO	D	SW	TG	WH	ZA	ZB	
32	18	10	15	8.8	36	36	M6x1.25	13	4	10	10	4.2	M3	8	25	8	27	43	
35	18	10	15	8.8	30	30	M6x1.25	13	4	10	10	4.2	M3	8	25	8	27	43	
40	18	10	23.5	11.8	40	40	G 1/8	M6x1.25	16	5	12	7.8	5.1	M3	10	32.5	7	44	55
45	18	10	23.5	11.8	44	44	G 1/8	M6x1.25	16	5	12	7.8	5.1	M3	10	36	7	43	52
50	22	16	24	15.8	46	46	G 1/8	M6x1.25	16	6	16	7.8	6.7	M3	13	45.5	8	40	53
55	22	16	24	15.8	50	50	G 1/8	M6x1.25	16	6	16	7.8	6.7	M3	13	44.5	8	49	57
60	28	20	26.5	19.8	46	46	G 1/8	M6x1.5	24	8	20	8.8	8.4	M3	16	53	10	54	66
75	35	25	35.5	24.8	55	55	G 1/8	M6x1.5	24	8	25	10	9.4	M3	21	66	10	67	77