



## TERMINÁL ETHERNET KAT.6A

490209

Konektor Cat6 RJ45 na DIN lištu

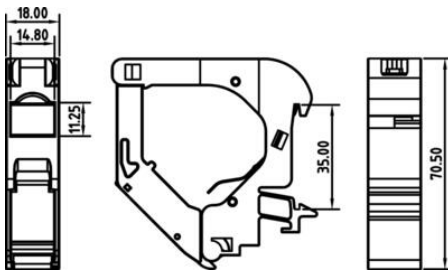
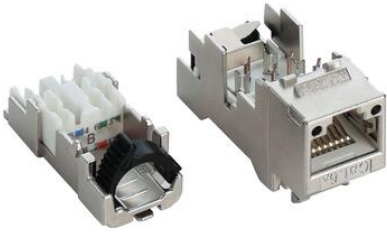
- 8-pinový a 10gigabitový prenos
- IP20
- Teplota -40 až 70 stupňov



### POPIS PRODUKTU

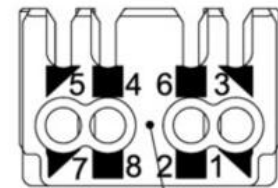
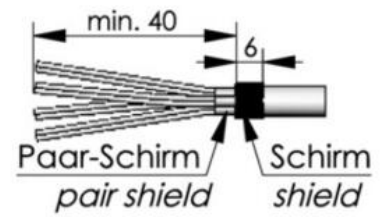
## ŠPECIFIKÁCIA

2421_Peak current (A)	1
Hmotnosť	0,053 kg
Max. napätie	50 V
Počet kontaktov	8
Prevádzková teplota max.	70 °C
Prevádzková teplota min.	-40 °C
Procesné pripojenie	IDC
Šírka	18 mm
Teplota skladovania do	70 °C
Teplota skladovania od	-40 °C
Trieda krytia	IP20

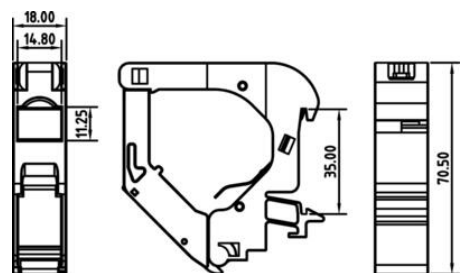


### RJ45

	TIA 568A	TIA 568 B	Profinet
1	WHGN	WHOG	YE
2	GN	OG	OG
3	WHOG	WHGN	WH
4	BU	BU	-
5	WHBU	WHBU	-
6	OG	GN	BU
7	WHBR	WHBR	-
8	BR	BR	-

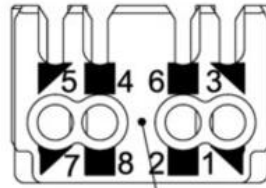
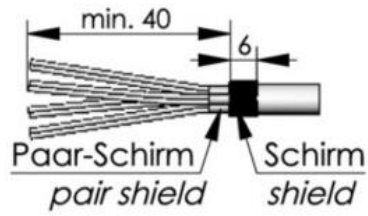


Anschluss  
Connection



RJ45

	TIA 568A	TIA 568 B	Profinet
1	WHGN	WHOG	YE
2	GN	OG	OG
3	WHOG	WHGN	WH
4	BU	BU	-
5	WHBU	WHBU	-
6	OG	GN	BU
7	WHBR	WHBR	-
8	BR	BR	-



Anschluss  
Connection