



Dopyt

ISD860 - 12A 72V INTELIGENTNÝ STUPEŇ OVLÁDAČA

4607212040
ISD860 RS232 P029.001.E101



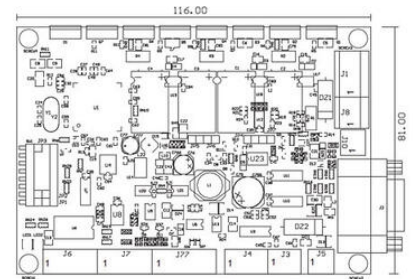
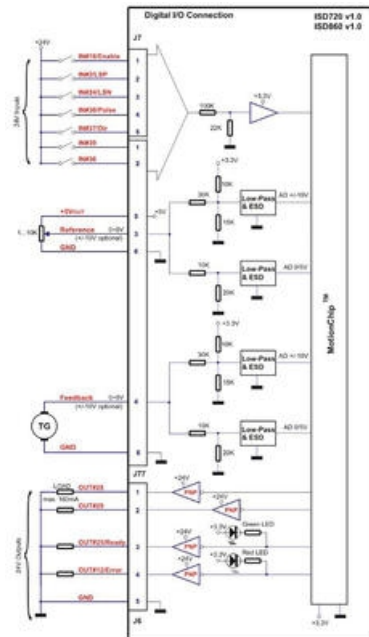
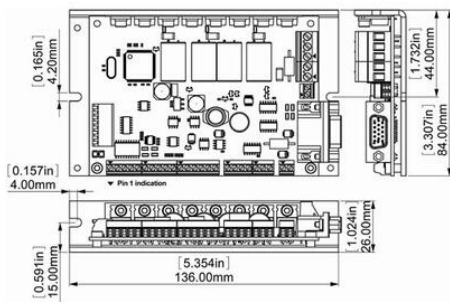
TECHNO SOFT
MOTION TECHNOLOGY



EasyMotion Studio compatible
Visual C++ / VB / LabVIEW / Linux
and PLC libraries available

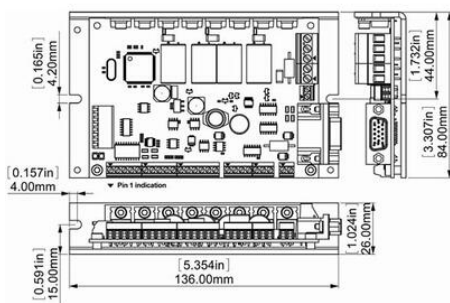
- Až 860W, 12A nepretržitý 31A špičkový, 12-72VDC
- DC, Brushless alebo lineárny motor s rovnakým ovládaním
- Komunikácia cez RS232, CANopen
- Vstup diferenciálneho snímača

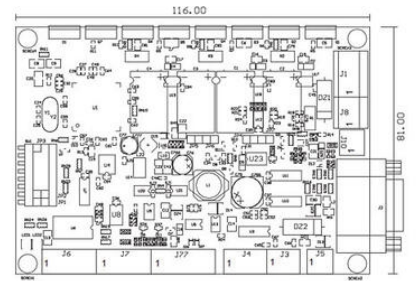
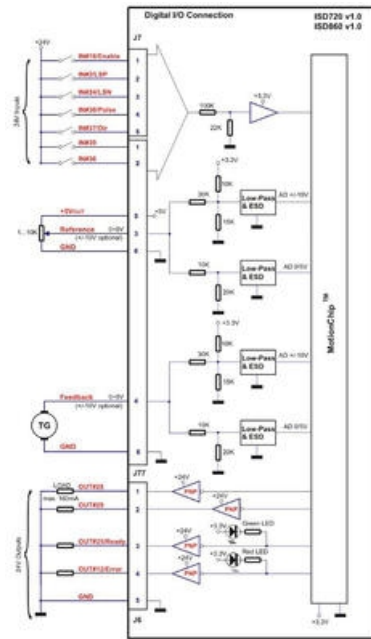
POPIS PRODUKTU



- J6:
- 1 - G-Pout1;
 - 2 - G-Pout2;
 - 3 - #Ready;
 - 4 - #Error;
 - 5 - GND;
- J7:
- 1 - Enable;
 - 2 - LSP;
 - 3 - LSN;
 - 4 - Pulse;
 - 5 - Direction;
- J77:
- 1 - Home;
 - 2 - #Pin;
 - 3 - Reference;
 - 4 - Feedback;
 - 5 - +5V;
 - 6 - GND;
- J4:
- 1 - +VCAN;
 - 2 - CAN_H;
 - 3 - CAN_LO;
 - 4 - GND CAN;
- J1:
- 1 - Phase A;
 - 2 - Phase B;
 - 3 - Phase C;
 - 1 - +Vsp;
 - 2 - GND;
- J5:
- 1 - 232RX;
 - 2 - GND;
 - 1 - +Vsp;
 - 2 - GND;
- J8:
- 1 - GND;
 - 2 - ENCB+;
 - 3 - +5V;
 - 4 - HALL1+;
 - 5 - HALL1-;
 - 6 - MotorTemp;
 - 7 - ENCB-;
 - 8 - ENCA+;
 - 9 - HALL2+;
 - 10 - HALL2-;
 - 11 - ENCA-;
 - 12 - ENCB;
 - 13 - GND;
 - 14 - HALL3+;
 - 15 - HALL1-;
- J10:
- 1 - +Vmot;
 - 2 - Break;
- J4-HDB15:
- 1 - ENCA+;
 - 2 - ENCB+;
 - 3 - +5V;
 - 4 - HALL1+;
 - 5 - HALL1-;
 - 6 - MotorTemp;
 - 7 - ENCB-;
 - 8 - ENCA-;
 - 9 - HALL2+;
 - 10 - HALL2-;
 - 11 - ENCA-;
 - 12 - ENCB-;
 - 13 - GND;
 - 14 - HALL3+;
 - 15 - HALL1-;

Note: All the connectors on board are screw connectors except the J2 which is a high density HDB15 connector.





- J6:**
1 - Gpout1;
2 - Gpout2;
3 - #Ready;
4 - #Error;
5 - GND;
6 - GND;
- J7:**
1 - Enable;
2 - LSP;
3 - LSN;
4 - Pulse;
5 - Direction;
- J77:**
1 - Home;
2 - GPin;
3 - Reference;
4 - Feedback;
5 - +5V;
6 - GND;
- J4:**
1 - +VCAN;
2 - CAN_H;
3 - CAN_LO;
4 - GND CAN;
1 - Phase A;
2 - Phase B;
3 - Phase C;
- J5:**
1 - +Vsp;
2 - GND;
- J8:**
1 - GND;
2 - +Vmot;
3 - +5V;
4 - HALL1+;
5 - HALL1-;
6 - MotorTemp;
7 - ENC2+;
8 - ENC2-;
9 - HALL2+;
10 - HALL2-;
11 - ENCA-;
12 - ENCB-;
13 - GND;
- J10:**
1 - +Vmot;
2 - Break;
- J4-HDB15:**
1 - ENCA+;
2 - ENCB+;
3 - +5V;
4 - HALL3+;
5 - HALL3-;
6 - MotorTemp;
7 - ENC2+;
8 - ENC2-;
9 - HALL2+;
10 - HALL2-;
11 - ENCA-;
12 - ENCB-;
13 - GND;
14 - HALL3-;
15 - HALL1-;
- Note: All the connectors on board are screw connectors except the J2 which is a high density HDB15 connector.