



# TERMOČLÁNKY

Séria TC95



TC95

Termočlánok

- Teplota -196°C až 600°C
- PT100
- Telo nerez, špeciálne materiály
- ATEX, IECEx, GOST

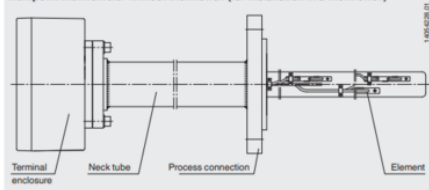


## POPIS PRODUKTU

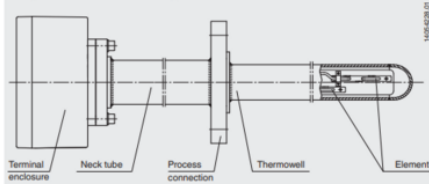
## ŠPECIFIKÁCIA

<b>Materiál</b>	Nerezová oceľ 316L, Nerezová oceľ 316Ti
<b>Materiál kontaktnej časti</b>	Zliatina
<b>Zhoda s normami</b>	NAMUR, Ex-ia

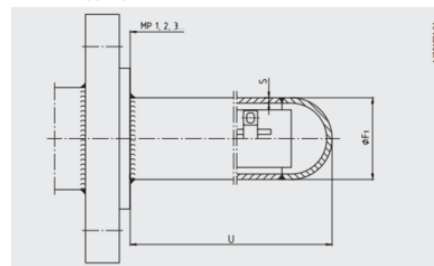
Multipoint thermometer without thermowell (for installation in a thermowell)



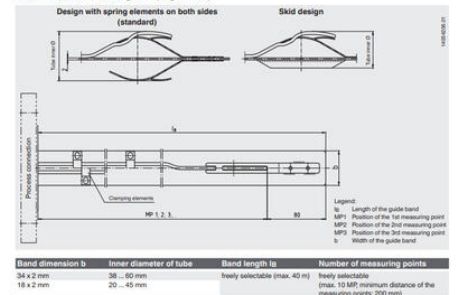
Multipoint thermometer with integrated thermowell



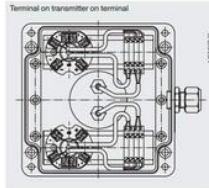
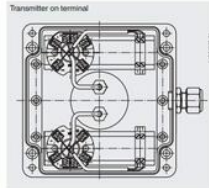
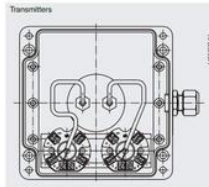
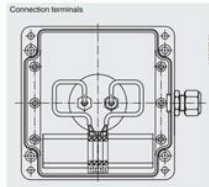
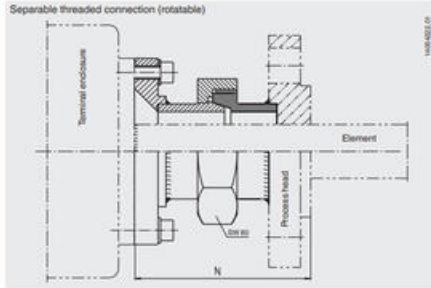
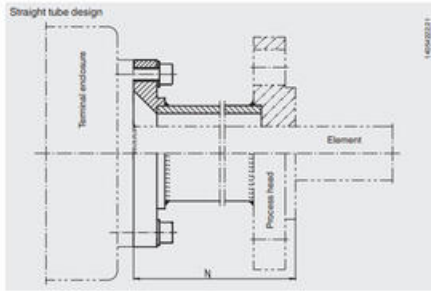
■ Thermowell (option)



■ Element (flat-steel band design with spring elements)



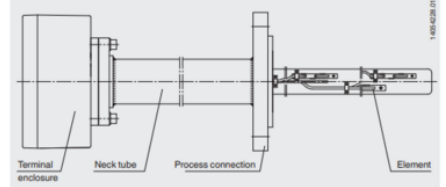
### ■ Neck tube



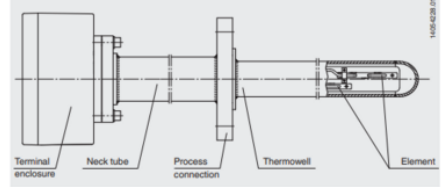
The actual wiring can deviate from the illustration in the data sheet.

Connection options in the terminal enclosure	Terminal enclosure dimensions in mm		
	ca. 160 x 160	ca. 160 x 260	ca. 250 x 400
Connection terminals	up to 10 MP	up to 10 MP	up to 10 MP
Transmitters	up to 4 MP	up to 8 MP	up to 10 MP
Transmitter on terminal	up to 3 MP	up to 8 MP	up to 10 MP
Terminal on transmitter on terminal	up to 2 MP	up to 4 MP	up to 8 MP

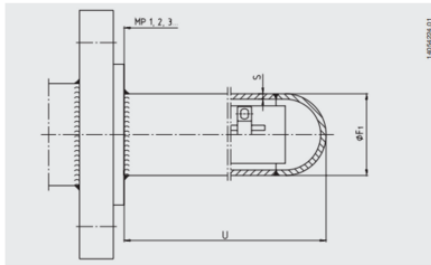
### ■ Multipoint thermometer without thermowell (for installation in a thermowell)



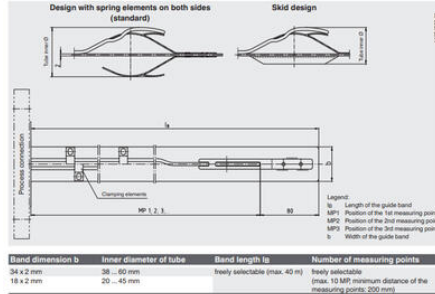
### ■ Multipoint thermometer with integrated thermowell



### ■ Thermowell (option)

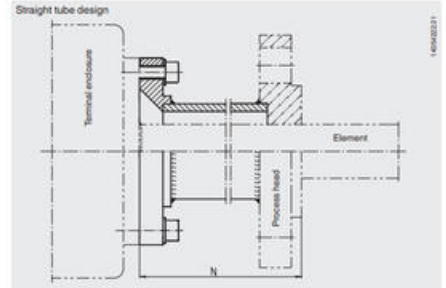


### ■ Element (flat steel band design with spring elements)

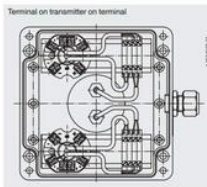
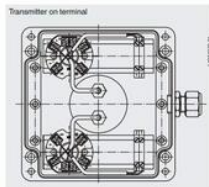
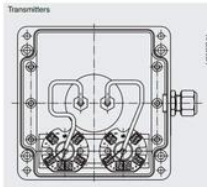
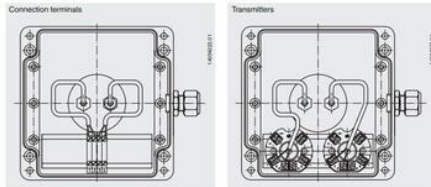
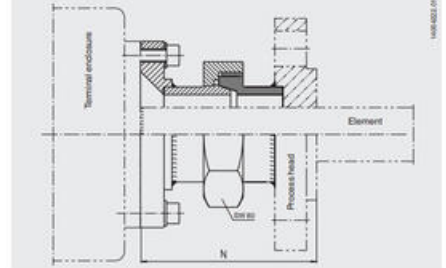


Band dimension b	Inner diameter of tube	Band length lb	Number of measuring points
34 x 2 mm	38 – 60 mm	freely selectable (max. 40 m)	freely selectable
18 x 2 mm	20 – 45 mm		(max. 10 MP minimum distance of the measuring points: 200 mm)

### ■ Neck tube



### ■ Separable threaded connection (rotatable)



The actual wiring can deviate from the illustration in the data sheet.

Connection options in the terminal enclosure	Terminal enclosure dimensions in mm		
	ca. 160 x 160	ca. 160 x 260	ca. 250 x 400
Connection terminals	up to 10 MP	up to 10 MP	up to 10 MP
Transmitters	up to 4 MP	up to 8 MP	up to 10 MP
Transmitter on terminal	up to 3 MP	up to 8 MP	up to 10 MP
Terminal on transmitter on terminal	up to 2 MP	up to 4 MP	up to 8 MP