



## TERMOMETRE

Séria 74

A74-45709110  
Termometer Ø100 0-80°C Tri-clamp DN 1 1/2

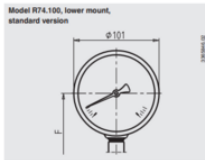
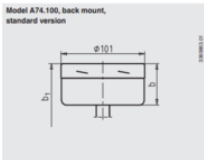
- Plynové
- Teplota -20°C až 100°C
- Ø100 mm
- Rôzne aseptické pripojenie
- 3A certifikát



### POPIS PRODUKTU

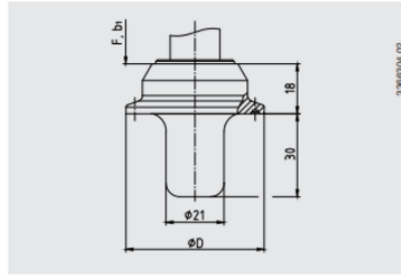
## ŠPECIFIKÁCIA

Configured measuring range ending value	80 °C
Configured measuring range starting value	0 °C
Insertion length	30 mm
Materiál kontaktnej časti	Nerezová oceľ
Materiál skla	Laminované bezpečnostné sklo
Materiál tela	Nezerová oceľ 1,4301
Plug diameter	21 mm
Pozícia pripojenia	Zadný
Prevádzková teplota max.	100 °C
Prevádzková teplota min.	-20 °C
Priemer	100 mm
Teplota okolia do	60 °C
Teplota okolia od	-40 °C
Tlaková odolnosť max	25 bar
Trieda krytia	IP65
Zhoda s normami	3-A

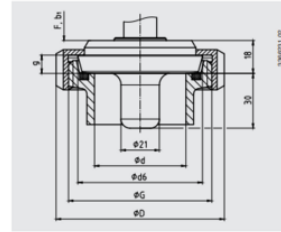


b = 50 mm  
b = 80 mm  
F = 82 mm

Type of process connection: Clamp connection



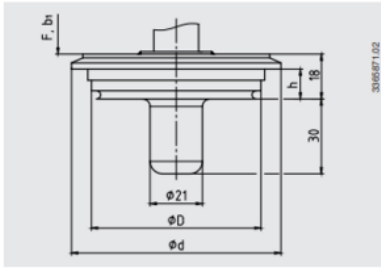
Type of process connection: Threaded connection per DIN 11851  
Pipe standard: Pipes per DIN 11850 row 2



DN	For pipe Outer Ø x wall thickness	PN	Dimensions in mm				
			G	d	D	d <sub>s</sub>	g
40	41 x 1.5	40	Rd 65 x 1/6	38	78	56	10
50	53 x 1.5	25	Rd 78 x 1/6	50	92	68.5	10
80	85 x 2	25	Rd 110 x 1/4	20	127	100	12

3-A conformity only in combination with profile sealing from SKS Komponenten BV or Kieselmann GmbH.

Type of process connection: VARIVENT®

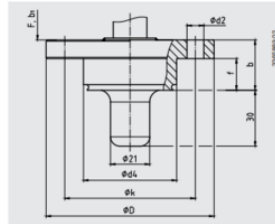


Access unit connection	PN <sup>2)</sup>	Dimensions in mm		
		D	d	h
Form F	25	50	66	12.3
Form N	25	68	84	12.3

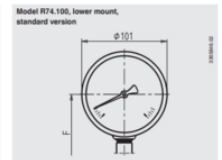
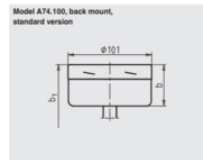
<sup>2)</sup> Pay attention to the pressure rating of the VARINLINE® access unit.

Note:  
Suitable for installation into the VARINLINE® access unit from GEA  
Tuchenhagen.

Type of process connection: NEUMO BioControl®

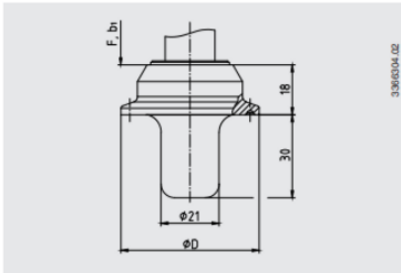


BioControl® connection	PN	Dimensions in mm					
		d <sub>s</sub>	d <sub>t</sub>	D	f	b	k
Size 50	16	4 x Ø 9	50	90	17	27	70
Size 65	16	4 x Ø 11	68	120	17	27	95
Size 80	16	4 x Ø 11	87.5	140	25	37	115

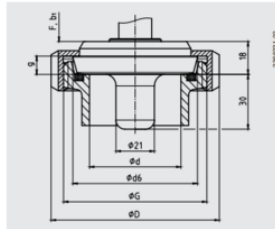


b = 50 mm  
b = 80 mm  
F = 82 mm

Type of process connection: Clamp connection



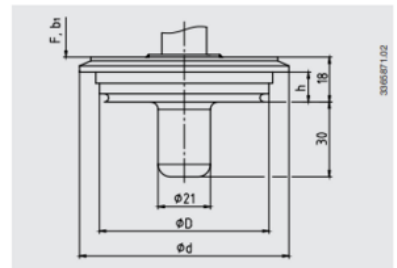
Type of process connection: Threaded connection per DIN 11851  
Pipe standard: Pipes per DIN 11850 row 2



DN	For pipe Outer Ø x wall thickness	PN	Dimensions in mm				
			G	d	D	d <sub>s</sub>	g
40	41 x 1.5	40	Rd 65 x 1/6	38	78	56	10
50	53 x 1.5	25	Rd 78 x 1/6	50	92	68.5	10
80	85 x 2	25	Rd 110 x 1/4	20	127	100	12

3-A conformity only in combination with profile sealing from SKS Komponenten BV or Kieselmann GmbH.

Type of process connection: VARIVENT®

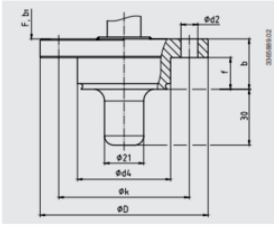


Access unit connection	PN <sup>2)</sup>	Dimensions in mm		
		D	d	h
Form F	25	50	66	12.3
Form N	25	68	84	12.3

<sup>2)</sup> Pay attention to the pressure rating of the VARINLINE® access unit.

Note:  
Suitable for installation into the VARINLINE® access unit from GEA  
Tuchenhagen.

Type of process connection: NEUMO BioControl®



BioControl® connection	PN	Dimensions in mm					
		$e_1$	$e_2$	$D$	$f$	$b$	$h$
Size 50	16	4 x Ø 9	50	90	17	27	70
Size 65	16	4 x Ø 11	68	120	17	27	95
Size 80	16	4 x Ø 11	87.5	140	25	37	115