



Dopyt

TERMOMETRE

Séria 75

M75

Termometer plynový

- Plynové
- Teplota 50°C až 700°C
- Ø100 mm
- Pripojenie G, NPT

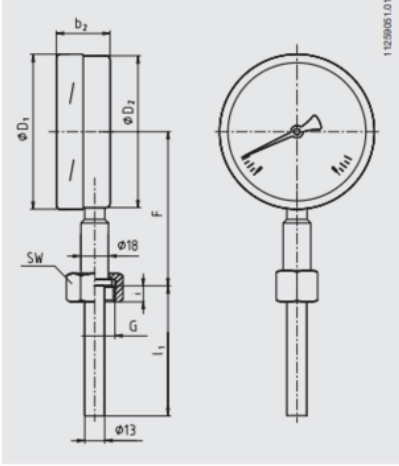


POPIS PRODUKTU

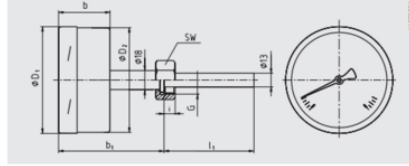
ŠPECIFIKÁCIA

Liquid Attenuated	Nie
Materiál kontaktnej časti	Nerezová oceľ 316Ti
Materiál skla	Laminované bezpečnostné sklo
Materiál tela	Nezerová oceľ 1,4301
Plug diameter	13 mm
Prevádzková teplota max.	600 °C
Prevádzková teplota min.	150 °C
Priemer	100 mm
Teplota okolia do	60 °C
Teplota okolia od	0 °C
Tlaková odolnosť max	25 bar
Trieda krytia	IP66

Model R75.100, lower mount (LM)



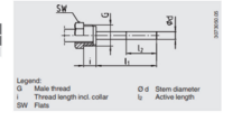
Model A75.100, back mount (BM)



Design 2, male nut

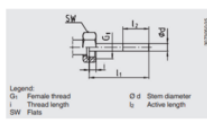
Standard insertion length $l_1 = 120, 140, 180, 230$ mm

Nominal size	Process connection	Dimensions in mm		
NS	G	I	SW	ϕd
100	G 1/2 B	22	32	13



Design 3, union nut
Standard insertion length $l_1 = 89, 126, 186, 226, 276$ mm

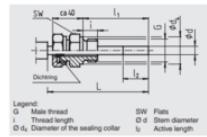
Nominal size	Process connection	Dimensions in mm		
NS	G	I	SW	ϕd
100	G 1/2 B	10.5	32	13



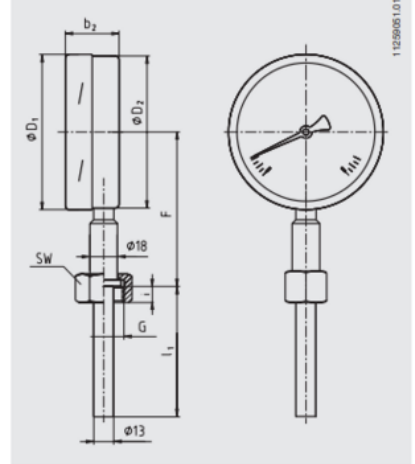
Design 4, compression fitting (sliding on stem)

Insertion length $l_1 =$ variable
Length $L = l_1 + 40$ mm

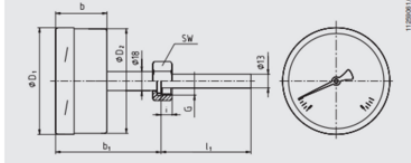
Nominal size	Process connection	Dimensions in mm		
NS	G	I	SW	ϕd
100	G 1/2 B	16	32	13
	1/2 NPT	20	30	-



Model R75.100, lower mount (LM)



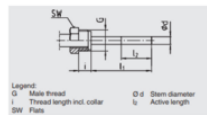
Model A75.100, back mount (BM)



Design 2, male nut

Standard insertion length $l_1 = 120, 140, 180, 230$ mm

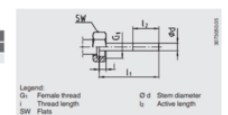
Nominal size	Process connection	Dimensions in mm		
NS	G	I	SW	ϕd
100	G 1/2 B	22	32	13



Design 3, union nut

Standard insertion length $l_1 = 89, 126, 186, 226, 276$ mm

Nominal size	Process connection	Dimensions in mm		
NS	G	I	SW	ϕd
100	G 1/2 B	10.5	32	13



Design 4, compression fitting (sliding on stem)

Insertion length $l_1 =$ variable
Length $L = l_1 + 40$ mm

Nominal size	Process connection	Dimensions in mm		
NS	G	I	SW	ϕd
100	G 1/2 B	16	32	13
	1/2 NPT	20	30	-

